



**International Journal of Electronic Security and Digital Forensics**

ISSN online: 1751-9128 - ISSN print: 1751-911X  
<https://www.inderscience.com/ijesdf>

---

**Internet of things-based virtual private social networks on a text messaging strategy on mobile platforms**

Alagappan Annamalai, Ramesh Chandra Poonia, Suresh Shanmugasundaram

**DOI:** [10.1504/IJESDF.2024.10061548](https://doi.org/10.1504/IJESDF.2024.10061548)

**Article History:**

Received: 03 August 2022  
Accepted: 27 October 2022  
Published online: 12 January 2024

---

## Internet of things-based virtual private social networks on a text messaging strategy on mobile platforms

---

### Alagappan Annamalai\*

Amity Institute Information Technology,  
Amity University Rajasthan,  
Jaipur, Rajasthan, India  
Email: annamalai.alagappan@bothouniversity.ac.bw  
\*Corresponding author

### Ramesh Chandra Poonia

Department of Computer Science,  
CHRIST (Deemed to be University),  
Bangalore, Karnataka,  
560029, India  
Email: rameshpooniam@gmail.com

### Suresh Shanmugasundaram

Department of Engineering,  
Faculty of Engineering and Technology,  
Botho University,  
P.O. Box 501564, Kgale KO,  
Near Game City, Gaborone, Botswana  
Email: suresh.shanmugasundaram@bothouniversity.ac.bw

**Abstract:** A virtual private social network (VPSN) allows a device to communicate securely with a network via the internet. Confidential data may be sent more securely thanks to the encrypted connection; it allows the user to operate remotely and prevents unauthorised parties from listening in. A mobile messaging platform is a text-enabled mailbox on the web. They enable companies and organisations to communicate with clients via text message. Social networking organisations may now use compute resources as a utility instead of creating and managing their computer infrastructures thanks to cloud computing (CC). An example of how a distributed sensor-actor environment might be used in a sociology-technical network is shown in this paper. The results are obtained as regular media access actively is 85.7%, security services in IoT is 85.37%, text attackers is 83.6%, loss of information is 82.8%, and blocking text messages is 91.48%.

**Keywords:** internet of things; IoT; cloud computing; virtual private; social; networks; mobile platform.

**Reference** to this paper should be made as follows: Annamalai, A., Poonia, R.C. and Shanmugasundaram, S. (2024) 'Internet of things-based virtual private social networks on a text messaging strategy on mobile platforms', *Int. J. Electronic Security and Digital Forensics*, Vol. 16, No. 1, pp.40–62.

**Biographical notes:** Alagappan Annamalai is a Senior Lecturer at the Botho University, Botswana. He has completed his BSc from the Bharathiyar University, India and his MSc from he Teeside University, UK. He is also a Certified Ethical Hacker and have conducted several training and workshops in Ethical Hacking. His research interests are cybersecurity, IoT, artificial intelligence, energy sector, networking and technical education. He has also published few articles in COVID-19 data analysis in respect to economy and cyber security.

Ramesh Chandra Poonia is an Associate Professor at the Department of Computer Science, CHRIST (Deemed to be University), Bangalore, India. Recently, he completed his Postdoctoral Fellowship from the CPS Lab, Department of ICT and Natural Sciences, Norwegian University of Science and Technology, Ålesund, Norway. He received his PhD in Computer Science from the Banasthali University, Banasthali, India in July 2013. His research interests are sustainable technologies, cyber-physical systems, path planning and collision avoidance in artificial intelligence and intelligent algorithms for autonomous systems.

Suresh Shanmugasundaram is currently working as a Professor at the Department of Engineering under the Faculty of Engineering and Applied Sciences at Botho University, Botswana. He graduated his Bachelor of Engineering in Computer Science and Engineering from Bharathiar University, India. Then, he graduated his Master of Science in Computer Networks from the Middlesex University, London. Later, he obtained his PhD from Anna University, Chennai, India He wrote a book on *Grid Computing Framework: Income Administration & Security* and presented several research papers in various scientific forums. His areas of interest include grid computing, cloud computing, distributed computing and engineering education.

---

## 1 Introduction

A private social network, members must first decide who they want to share their information with and how they want to share it. Social media sites like face book and twitter operate significantly differently than private networks like this (Fernández-Ardèvol et al., 2020). A group of people who communicate with each other regularly and the specific relationships or links that exists between them, such as in social networking websites (Grewal et al., 2020). Virtual communities arise from the internet when sufficient individuals engage in public discourse for a long enough periods and with enough human emotion to create virtual webs of personal relationships (Matthes et al., 2020). They will be communities based on where they live but on what they care about (Burbach et al., 2020). A social virtual private network (VPN) is a type of virtual private network generated automatically among peers based on the contacts they have established through a social networking site (Dwivedi et al., 2020). People who routinely communicate with one another over the internet and the specific connections or

relationships between them, such as those found on social networking sites (Geeng et al., 2020). Communication via virtual means occurs when two or more persons are not in the same room (Sivarajah et al., 2020). In an office setting, it is utilised by remote teams, and it is used in just about every business as well; it is common for corporate correspondence to occur via a variety of mediums for the majority of employees. Message, slack, or WhatsApp are examples of instant messaging apps (Kujur and Singh, 2020). Since they give a venue for open debate of things that would otherwise be taboo, virtual communities in their current form are useful to society (Tang and Hew, 2020). They provide a handy venue for individuals to gather and converse as an added benefit. In a virtual world sometimes called a virtual space, users may design their avatars and concurrently explore the virtual world, participate in its activities, and interact with other users, all while maintaining their privacy (Abkenar et al., 2021). Websites cannot see true IP address while using a VPN to access the internet (Raamkumar et al., 2020). As many individuals use the same VPN server, identity is effectively hidden from the outside world (García-Orosa et al., 2020). In networking or other intermediary networks, VPN links computers and isolates remote computer networks, preserving a tunnel of security and privacy between them (Brindha et al., 2020). The private social media refers to a network where users may choose who they wish to connect with privately rather than publicly (Razak et al., 2021). Using private social media gives greater control over who may access information and communications (Galea et al., 2020).

The secret to a successful marketing campaign is a well-thought-out message approach (Breitinger et al., 2020). In-store signage and advertising, customer service e-mails, and online material all directly impact how customers perceive brand (Fagherazzi et al., 2020). It is all about how position self-wireless carrier's implementation of text messaging entails delivering brief, alphanumeric messages between smartphones, pagers, and other hand-held devices (Dennis et al., 2020). SMS marketing is known as SMS marketing short for text messaging service by sending promotional offers, announcements, and news to consumers by text message is known as SMS marketing short for text messaging service (Ojagh et al., 2020). Briefly said, SMS marketing is a more efficient, convenient, and effective approach to connect with target audience. Using emotions to market is an emotional communication technique. A commercial that employs this strategy should elicit a strong emotional response from its target audience. Watch this commercial on the significance of first aid for a stunning example of emotional advertising (Milkova et al., 2021). An effective communication strategy is a plan for accomplishing communication goals. Marketing and public relations are examples of areas where this might be useful (Kim and Shrestha, 2020). Communication goals, target audience, communication plan, and channels go under the umbrella strategy. To achieve the organisation's goals, strategic communications involves message development that includes extensive planning and analysis of audience behaviour and perceptions (Gerke et al., 2020). Targeting particular audiences and aligning an organisation's communication goals with its structural goals are the primary objectives of the communications. Each user has a unique frequency of radio waves to communicate their text messages. A neighbouring cell tower picks up the signal, and then sent to another tower near the intended receiver for transmission (Kumar et al., 2020).

Wearable technology that gives clients customised experiences while they are out and about. Data from sensors is sent into minicomputers that use machine learning to perform actions on the data. Internet of things (IoT) gadgets, in essence, is little computers that may be hacked and infected with malware (Alkhamees et al., 2021). When diverse

intranets work together, IoT may supply vast amounts of detailed and historical data, even if the devices, local communication protocols, and deployment goals are heterogeneous. IoT makes it possible to create and combine new services and apps, giving individual users access to a new ecosystem where various intranets of things may work together (Bayer et al., 2020). Every day, people engage in a wide range of interactions. Many smart services and apps from the IoT would be utilised to improve their quality of life.

The paper's primary goals are summarised here:

- Some of the drawbacks include the fact that it is simpler for individuals to assume someone else's identity, the expectation to read and respond, and the overall distraction.
- The purpose of training and evaluating data to the social virtual social network and text messaging by using a system analysis.
- Access to cheaper travel prices, unrestricted streaming services, and no digital restrictions is made possible by using a virtual private network.
- Using virtual private social network (VPSN)-cloud computing (CC) instead of constructing and maintaining computing infrastructures, social networking firms will use compute resources as a service.

The rest of the paper disused in Section 2 of the study is devoted to a literature review of current methods, Section 3 proposed methods for VPSN-CC to be discussed, Section 4 for experimental analysis, and Section 5 conclusion of the paper.

## **2 Related work based on VPSNs on text messaging**

Wu et al. (2020) introduced that big data (BD) sources, such as smart cars, IoT devices, and sensor networks, differ from output volume and diverse traditional data sources. BD is generally kept on many network nodes, which is prone to data security and privacy difficulties, such as virus infection. In particular, the transmission of viruses through social networks can cause large-scale devastation and privacy breaches in the network. This work intends to give away to secure the security of BD. The experimental findings on two datasets reveal that model offers a reasonable description of the data virus transmission process. Better than both acquaintance immunisation and target immunisation techniques, this justifies the privacy-protecting strategy for huge network data.

Cecilia et al. (2020) explained that using smartphones and other mobile devices, mobile crowd sensing (MCS) is a way to collect and disseminate data that may be of interest to the general public. MCS consists of two separate trends. One is based on raw data from mobile sensors, and the other is based on data from social media networks and other internet sources, including e-mail and text messages. As the COVID-19 pandemic spreads across Spain, the authors of this paper provide an overview of the MCS research being conducted by the Spanish medical community to combat the epidemic. COVID-19 is putting today's society in danger, and governments are implementing lockdown and social distancing measures that significantly impact economics because of their impact on

public health. Smart quarantine techniques can be provided by MCS instruments when the number of illnesses drops significantly or new outbreaks occur.

King et al. (2020) said they do not get the necessary amount of aerobic exercise regularly aerobic physical activity (APA). Adult Latinos are an ethnic minority for which few culturally appropriate programmers have been created and evaluated. There has been no comprehensive comparison of SMS telehealth advice programmers to normal text message SMS communication channels for giving tailored APA information and assistance. Among the secondary outcomes, change in walking speed over a month and various types of APA, as measured by accelerometer and validated self-report measures. Potential mediators and modifiers of intervention success will be examined to understand better which subgroups benefit from the intervention. Methods and results are presented here, including the study's design and techniques for recruiting.

Lopez-Castroman et al. (2020) detailed the accounts indicating their usage to convey emotional anguish and suicidal thinking or planning have been cited in discussions regarding the hazards of online social networks. Suicidal conduct appears to rise due to the prevalence of cyberbullying (CB), suicide pacts, internet addiction, and extreme online groups. Narrative summaries of the scientific literature were used in this study to examine the topic. Some researchers use data mining, risk factor detection, and web activity trends to identify at-risk groups. Websites, screening, and mobile applications are among the methods described by others. Suicidal thoughts may necessitate more specific therapies, such as cognitive behavioural therapy. A successful decision support system must have many predictive models that have been developed, deployed, evaluated, and then merged. This may need a rearrangement of care for those who have expressed suicidal thoughts.

Kaufmann and Peil (2020) explained at the same time, just a fraction of the qualitative research potential of cellphones has been fully explored. By utilising some of the unique communication and multimedia elements afforded by cell phone instant messaging apps, the mobile instant messaging interview (MIMI) presented and evaluated in this article aims to close this gap in the market. An in-depth study of social interaction takes place via WhatsApp in several locations, using methodologies borrowed from diaries and the proven and true mobile experience sampling method, e.g., media usage. Evidence for this technique is provided by the findings of a pilot study done with young smartphone users, which details both the researcher's and participant's perspectives on mobile instant messaging interviews.

Tulu et al. (2020) introduced that content downloads on mobile devices have increased significantly since the development of mobile communication technology. For mobile network providers, the massive traffic volume is a serious barrier. The mobile social network (MSN) has been suggested to exploit mobile connectivity by unloading mobile traffic via device-to-device connections. Examine MSNs in of their characteristics, platforms, classification, advantages, and disadvantages. Research includes a look at how MSNs distribute data. After that, we'll look into and point up any potential problems with node selection in future networks. We discuss various future research areas and review the most pressing issues in MSNs node selection to wrap things up.

Azani and Liv (2020) explained they are utilising social media to spread terrorism-supporting messages to an enormous number of people at once. As with banks, media firms may be held accountable using a long arm of the law enforcement mechanism. It outlines a framework that widens legal accountability for the publication

of terrorist-supporting information to include the corporation, the platform, the web-user who posts the content, and the web-user who views the content, as well as the full chain of players involved. The paper contends that civil society can influence social change and create a mindset that holds corporations accountable for user-generated material by using criminal legal mechanisms at the national and international levels.

Sinanan and Gomes (2020) detailed the research on transnational migration has highlighted the significance of kinship ties and local communities. In addition, research on transnational families and digital media shows how to keep family ties strong and healthy. Researchers have paid less attention to the importance of emotional components of friendships, such as closeness and support systems, in the context of a culturally-comparison approach. Transnational migration and cross-cultural perspectives on friendship are topics that this paper adds to the research on and argues that the sorts of friendships formed by international students are crucial for capturing a variety in migrant relationships. It is necessary to conduct further study into the junction of digital media and migration, where the cross-cultural experience and emotions are explicitly addressed.

Sahoo and Gupta (2019) discussed that social networks have grown in popularity due to people's growing misunderstanding of the importance of privacy and security on the internet and in the media. For to be secure, questions must be asked from many different angles. The e-mail address and phone numbers of users have been revealed in previous research. High-level classification of current assaults has been offered in this study for recognising the issue and assessing the impact of such attacks on the world wide web. In addition, covered a complete review of several security defences. Based on these defensive strategies' accepted strengths and flaws, we have outlined research questions.

Manzerolle and Daubs (2021) said the examines two prominent mobile social media applications, Instagram and Snapchat, and how transactional aspects have been incorporated into them. Mobile social media is examined to connect the worlds of culture and commerce. Place this interface inside the larger finch movement when looking at, the greater political and economic backdrop. Snapchat's augmented reality capabilities serve as a foundation for new transactional possibilities in daily situations. In conclusion, argue that the transactional culture that these events indicate suggests a change to ordinary encounters becoming chances for purchasing.

Manca (2020) introduced the use of commercial social media in official educational settings is on the rise, although they were not originally designed for this purpose. As a result, scholarly research has mostly ignored social media sites like Snapchat and Vine that have gained much traction among young people. For this reason, investigating if and how platforms like Instagram, Pinterest, Snapchat, and WhatsApp have integrated into higher education's classrooms. Social media's instructional potential is partially realised, and different platforms use affordances to varying degrees.

Kizgin et al. (2020) explained it had been assumed that the process of acculturation is an adaptation process in which immigrants give up features of their ancestral cultures in favour of the cultural characteristics of their new home, i.e., assimilation. Acculturation preferences have been linked to various outcomes, including changes in consuming habits. According to recent research, social networks are becoming increasingly important in immigrants' communication, interactions, and connections. Brought together many thought leaders to show how social media is changing consumer acculturation research, and think it is an exciting time to be involved. According to the study's findings, social media has a significant influence on consumer acculturation.

Focused on VPSN behaviours in text messaging mobile strategy, this essay examines these techniques. Researchers are now using the recently created VPSN-CC virtual reality approach to fix some of the problems they discovered during their investigation. These difficulties may be overcome with the help of VPSN-CC. Millions of people throughout the world utilise social networking services. There are a lot of spammers and harmful users out there because of the simplicity with which they may access these people and the information they save on their accounts. As demonstrated in this research, there is spam on social networks and others like it. Created honey accounted on three major social networks for study and monitored the traffic they received. Working on a technology to help identify Twitter spammers. Thousands of spam accounts were terminated due to investigation, which shared with Twitter.

### **3 VPSNs on a text messaging strategy in mobile platforms**

Social networks are designed to meet human needs, such as changing a status on Facebook or tweeting a message to a large group of people about an event in their life. Furthermore, a few mouse clicks may disseminate films, images, and even news and connections. Because of the near-instantaneous updates provided by the network's users, personal connections may be better managed and carried on even when separated geographically. Furthermore, social networks have made people's relationships more apparent and quantifiable than ever before, with friends being tallied, grouped and compared to one's. It is becoming common for items and objects to communicate their status and operation as part of the IoT. When the washing machine is finished, it makes a twittering sound.

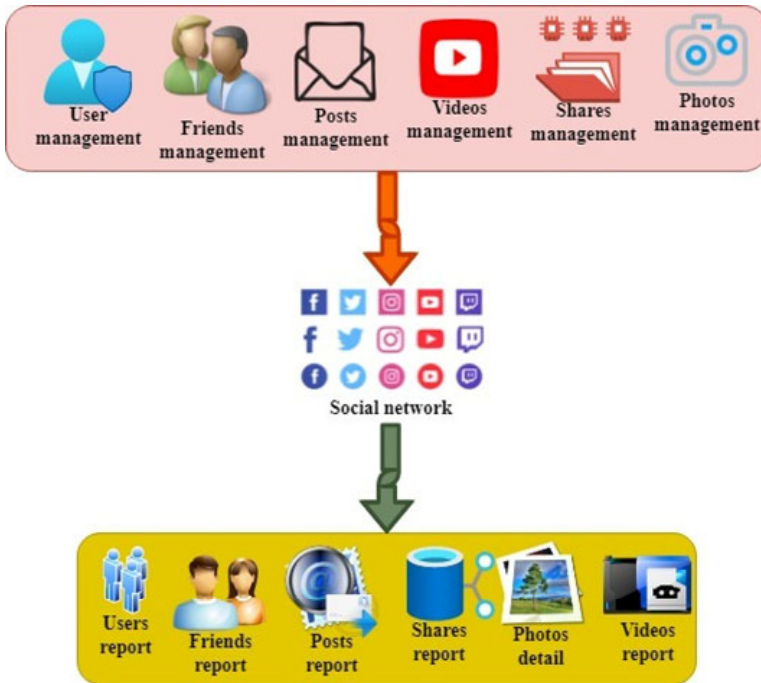
Figure 1 says IT resources like systems, devices, applications, storage systems, networks and SaaS services may be managed through user management. Social media buddies are likely folks with whom exchange ideas, stories, and feelings. This is done by digital means rather than taking place in person. In the end, this is just another way to communicate. A company's social media managers are responsible for responding to consumer questions and complaints through various social media channels, including posting text, video, and photos that capture the attention of the company's target market. With video, can get point over in a short amount of time and pique the interest of audience right away. Successful social media campaigns are built on a condensed and concise approach to the material that keeps viewers engaged but leaves them wanting more. In addition to indicating how popular posts are, social shares raise the overall number of people who see them. In the case of celebrity image management, the social media ecosystem offers a chance to reach out to a wider range of the public in a more intimate and participatory manner. When it comes to creating an image, celebrities' social media presence is significant. Social networks are websites that bring together people with shared interests to exchange information, images, and videos. Data may be extracted from numerous social networks Facebook, Twitter, LinkedIn, etc. and metrics follows and likes throughout various periods by using a social media report. Almost nothing beats the joy that comes from having good friends in life. Relationships with friends directly impact mental health and well-being. As a business, it is important to know when to engage with existing and future consumers and which themes resonated the most on a particular day, according to social media statistics. The underlying share is what buying when invest in stocks, and want to hang on to it for the long haul. Model, white balance,



aperture and shutter speed are just a few examples of what find in this section. Any incident, initiative, or procedure can be the subject of a video report. Analysis of the subject is extensive.

$$K = \int \int \int ka \in \cot p \frac{a}{p} \int \vartheta p^4 \sqrt{p} \tag{1}$$

**Figure 1** Social networks in management system (see online version for colours)



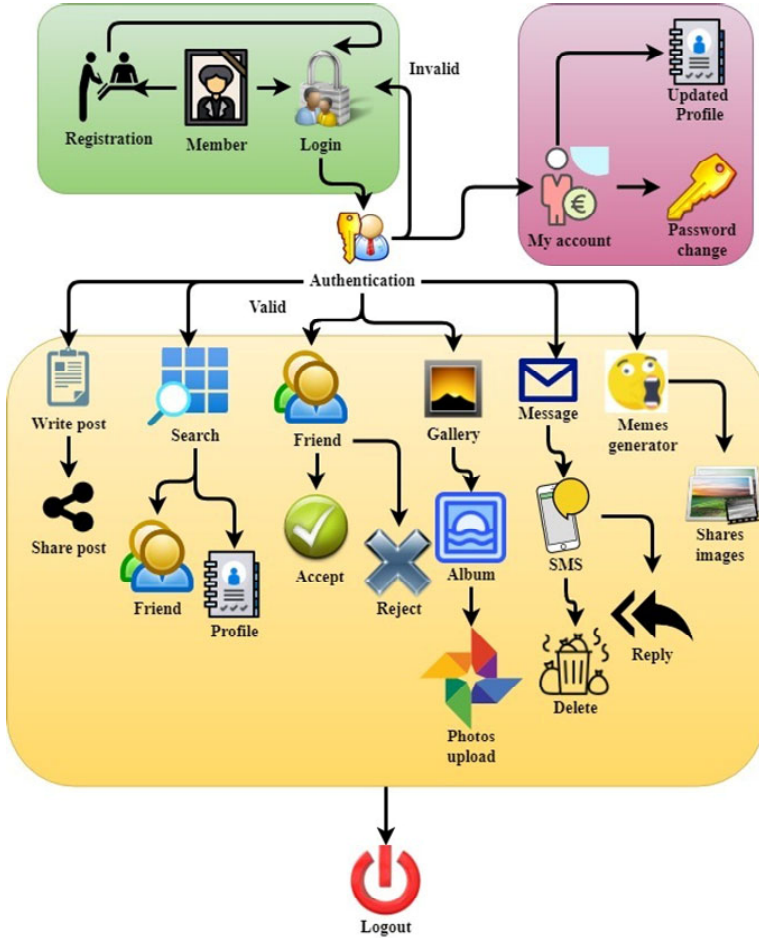
Equation (1) says  $K$  is the tracking of user management,  $a$  for friends management,  $p$  for planning to transmission,  $\cot$  for the trigonometric function of posts management,  $\vartheta$  for videos management. Being a genuine leader requires having trust in team members and knowing that no matter how many times make a mistake or fail, they will always be there to help out. When have faith in leadership and friendship, have someone to rely on.

$$A = \sum (d \tan e) \amalg ed \alpha \frac{d}{\int \int e} \tag{2}$$

Equation (2) says  $A$  for data shares management,  $d$  for photos management,  $e$  for social networks,  $\tan$  for the trigonometric function of user report,  $\alpha$  for the mathematical function of the friend’s report. Users can be monitored for how often they log in to or access particular applications or data through user management. There are several benefits to this approach, including better overall security because it focuses on the need to know basis and makes it easier to implement new software and technologies.

$$N = O \sum b \sec b \frac{\Pi b(O)3}{\max O} \tag{3}$$

**Figure 2** Authentication for the social application (see online version for colours)



Equation (3) says  $N$  for post report,  $O$  for evolving methodologies of shares report,  $b$  for automated recording in data visualisation,  $\sec$  for the trigonometric function of photos details,  $\max$  for maximum value videos outcomes. Keeping in touch with friends, family, co-workers, customers, and other business associates via online social media are called social networking. It is possible to use social networking sites like Facebook, Twitter, LinkedIn, and Instagram for social and commercial purposes. It is possible to think of a social network as a diagram of the relationships between the people in it.

Figure 2 says to notify the general public that a given property document has been signed, the goal of document registration is to do so. Two or more people who interact, have similar qualities and have a collective feeling of oneness constitute a social group in the social sciences. People who belong to a group have something in common, such as common interests, values, beliefs, and ethnic or social backgrounds. The social network

provider receives a login request. Funds management uses updated profiles to keep track of both commitments and actual data modifications. To keep accounts safe, should change password regularly so that can be sure that no one else has access to them. A social media account is any website, application, or similar electronic medium through which users may produce and share information, ideas, private messages, and other forms of material. There are two types of authentication: two-factor authentication and two-step verification. When the written content is shared with additional audiences, such as a peer-editor, the teacher, or even the wider public, this is known as post-writing. The amount of times a Facebook ad was shared on social media is known as post shares. Timelines, groups, and Pages may all be used to share posts. Users may narrow their search results by limiting their results to certain social networks and generating highly personalised results using a social search engine. Teens may meet new people and learn more about them through social media, which is an important part of making new friends. When utilising social networking sites like LinkedIn and Facebook, tools, and collaboration software like Jive, connections, or social text, people create social profiles to describe their social qualities. In a courtroom or other structure, the area is reserved for spectators. Clearing the public gallery allows testimony to be presented in private. When cannot speak to someone directly, can leave a message for them to find out information or make a request. Web-based meme generator meme generator lets users quickly and simply generate their visual image memes. To protect the privacy of its users, several social networking applications rely on SMS services for authentication, such as WhatsApp, Bee Talk, and Viber. Go to settings and privacy by clicking on profile picture. Click change next to where logged in under login and security on the first tab that appears. Account's active sessions will be displayed here. Click sign out to log out of any of those sessions.

$$B = (r\partial) \geq \sum r \oint \beta \cot \frac{1}{\beta} \propto \log_2 r \tag{4}$$

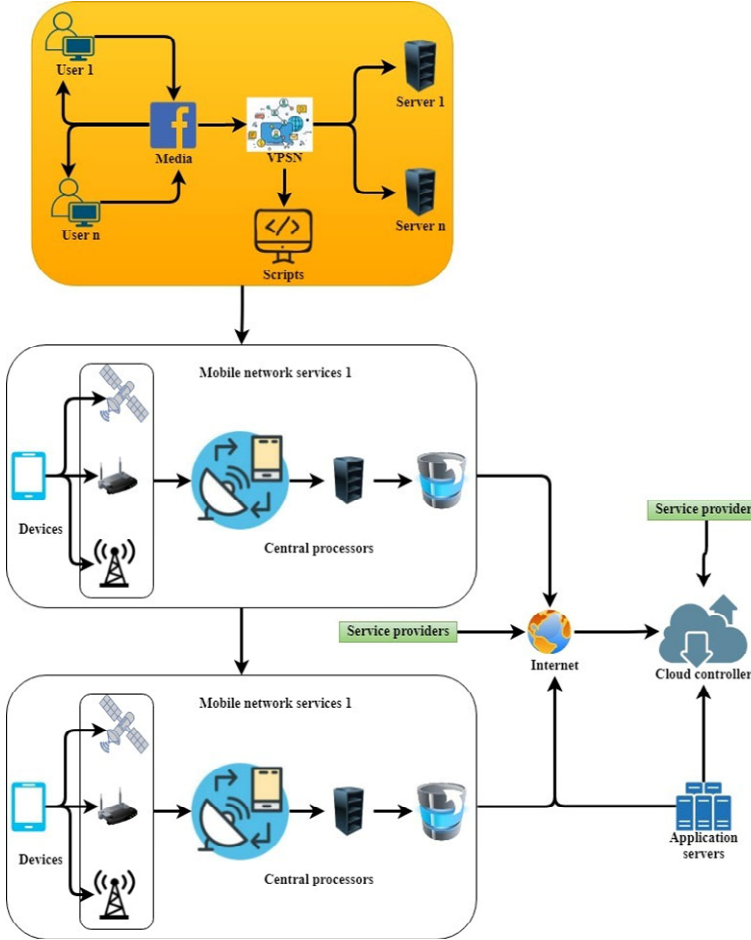
Equation (4) explained before registration,  $r$  for the member,  $\partial$  for feedback about login,  $\beta$  for the mathematical function of invalid,  $\cot$  for the trigonometric function of the updated profile,  $\log$  for the logarithmic function of my account. It is easy to lose track of where signed in to social media accounts when have so many gadgets and social media accounts. Even if using someone else's computer, it is a good idea to log out of social networking sites like Facebook after done with them. All of personal information, including messages, photographs, videos, contacts, friends, and sensitive data, may be accessed if someone gains access to account.

$$C = \log \left( J - \frac{8}{\partial^2} \right) \sum J \int \int \int \delta \tan \alpha \delta \tag{5}$$

Equation (5) denotes  $C$  for password change,  $J$  for visualisation of data in authentication,  $\log$  for the logarithmic function of write post,  $\partial$  for share post,  $\tan$  for the trigonometric function of search and friends,  $\delta$  is the mathematical function of the friends in accepts. A marketing automation platform known as an SMS marketing service is employed to deliver text messages to a list of phone numbers. One of the most effective ways to get message out is using text messaging or a short messaging service. Successful businesses combine the two approaches. Almost everybody may be reached when engaged on social media and SMS simultaneously.

$$Z = t \cot t \log \alpha + \frac{t}{(\varphi - 1)^2} \amalg t \tag{6}$$

**Figure 3** Mobile network in the service provider (see online version for colours)



Equation (6) says that  $Z$  is responsible for the gallery,  $t$  for message,  $\log$  for the logarithmic function of memes generators,  $\varphi$  for distance learning for share image,  $\cot$  for the trigonometric function of planning analysis of photo uploads,  $\alpha$  is the mathematical function of the profile. Meme generator lets users create and share image macros containing a photo or artwork overlaid with text in the form of famous internet memes. Image macros, known as meme graphics, are frequently used in internet communication because they feature text formatted to fit various templates. Upload and rotate any image in real-time, add unlimited text boxes, select any font, colour, and size, and save meme in the format of choice.

Figure 3 says according to a research study, there are four sorts of social media users: professionals, Sharers, creators and bonders. These groupings were developed based on comparable digital footprints that they leave behind. Social networking uses

internet-based social media platforms to keep connected with friends, family, or peers. A script is a document that describes every auditory, visual, behavioural, and linguistic ingredient necessary to present a tale. Social network visualisation refers to producing graphical visualisations of the linkages between social players. A server is a computer connected to a network of other workstations called clients. A mobile network operator is a telecommunications service provider firm that delivers wireless voice and data connectivity for subscribers. The architecture, while the cell chip can have a variety of various configurations, the fundamental design is a multi-core semiconductor made of one power processor element. Ever provider denotes the firm supplying the data centre and server hardware, which the customer utilises for dedicated server hosting. Social networking uses internet-based social media platforms to keep connected with friends, family, or peers. A cloud controller is storage equipment that automatically transports data from on-premises storage to cloud storage. An application server is a server that hosts apps. An application server framework provides resources to design web apps and a server environment to run them. An application server framework contains a full-service layer concept.

$$P = (Q) * \sqrt{z \sum Q} \iint z \phi_3 z \cot Q \tag{7}$$

Equation (7) explained  $P$  for a user,  $Q$  for media,  $z$  for implementation of VPSN,  $\phi$  is the mathematical function of the server,  $\cot$  is the trigonometric function of scripts. Data that is often accessible is kept on-premises, whereas less regularly accessed data is stored on the cloud. Network management software and physical hardware are in the cloud with cloud-based networking. Client or organisation-interconnected virtual machines are examples of this type of cloud network. Cloud-enabled networking is a hybrid of on-premises and CC.

$$S = \frac{1}{(x)} \log_7 x \iiint \phi x[\phi] \tag{8}$$

Equation (8) says  $S$  for social workers,  $x$  for the mobile network,  $\log$  for the logarithmic function of the device,  $\phi$  is the mathematical function of control processors. internet and social media give young people a wide range of advantages and empower them in various ways. Young people may now keep in touch with old friends and make new ones and have access to a wealth of knowledge that was previously out of reach. Building an audience for products and services on social media is easier with the correct web hosting. Make sure select the correct web hosting company upfront if consider launching social networking site to expand as audience needs. The internet-based nature of social media facilitates the rapid electronic transmission of content, such as personal data, documents, films, and photographs, among users.

$$T = \cot \left( w \max_4 \alpha \oint w \alpha - 1 \right) w \int \alpha \tag{9}$$

Equation (9) says  $T$  for the service provider,  $w$  for circuit platform of the internet,  $\cot$  for the trigonometric function of strength in cloud controller,  $\alpha$  is the mathematical function for application,  $\max$  for the maximum value of the system. A service provider is a person or organisation that delivers a service to another person or organisation. Individual consultants, law companies, design shops, and investment banks are just a few examples

of corporations’ potential service providers. A server is a device that accepts, stores, and transmits data. As a result, it is a servant and exists solely to perform services. Computer, software, and even storage devices may all perform the role of server and offer various services.

**Figure 4** Data management in social media (see online version for colours)

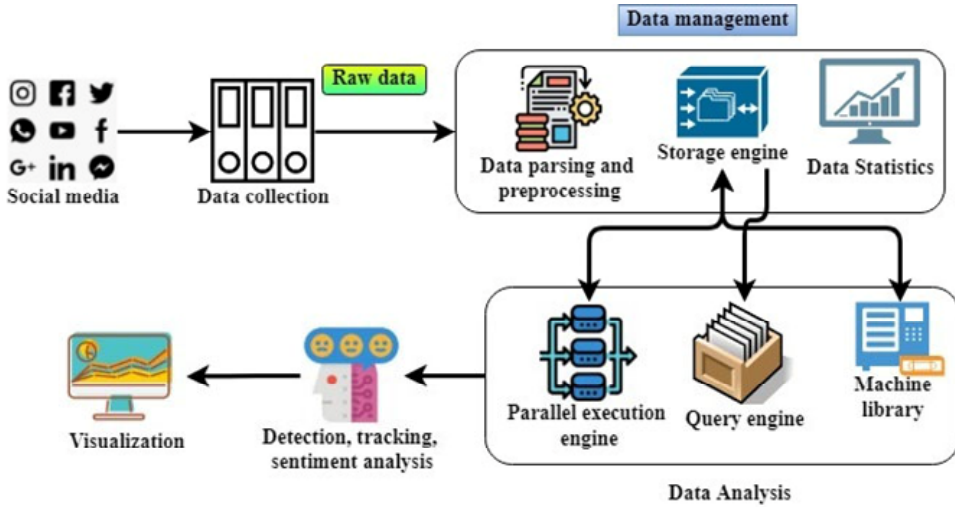


Figure 4 says when people use social media, they generally utilise it for social contact, access to information, and decision-making. One of the best ways to connect with individuals locally and worldwide is through social media. What call social data refers to information gathered via online social media services. Shows what people are doing with content and how they are sharing it. Likes follow, and shares are just a few examples of the types of data found on social networking sites like Facebook. Results on Twitter include the number of retweets or impressions. Facebook, Twitter, Instagram, e-mail, and e-commerce sites are some social and digital networks that a social data management platform pulls audience data from. In addition, it splits the data into critical target audiences for brand. Raw data is transformed into an understandable format using a data mining approach known as data pre-processing. It is common for real-world data to be inconclusive, inconsistent, or deficient in specific behaviours or patterns. A database management system employs a storage engine to generate, read, and update data in a database. An individual data point is a discrete unit of recorded information that may be analysed. Statistics can be derived from unprocessed data. Statistical outcomes are the interpretation and presentation of data analysis. The functionalities are accessed through system libraries, specific functions or programmers that application applications and system utilities use. This software sits on top of the database or server and conducts queries to retrieve information from the database or server for users or applications. The ability to use many to execute a single database action in parallel is known as parallel execution. Imagination, painting a picture in mind or making something visible are all examples of visualising. Analysis of a piece of writing’s sentiment can reveal whether the author holds an optimistic, pessimistic, or neutral view on a certain subject.

$$E = (\delta + u) \sum y \sec u \llbracket y \rrbracket \beta \log y \tag{10}$$

Equation (10) explained  $E$  for social media,  $u$  for unified coaching of data collection,  $y$  for feedback for raw data,  $\beta$  for the mathematical function of the data parsing,  $\sec$  for the trigonometric function of pre-processing,  $\log$  for the logarithmic function of data statistics,  $\delta$  is the mathematical function of the development. An internet search engine is a piece of computer software that facilitates the discovery of data by using keywords or phrases. Even though there are millions of pages online, search engines can deliver results rapidly because they constantly monitor the internet and index every page they come across. Using a search engine is a web-based technology that helps people finds information online. Google, Yahoo!, and search are all well-known search engines.

$$F = \log \left( k - \sqrt[3]{l} \prod k(\beta) \frac{1}{\partial^2} \right) * l \tag{11}$$

Equation (11) denotes  $F$  for a total profile of data management,  $k$  for visualisation of data analysis,  $l$  for machine library,  $\log$  for the logarithmic function of query,  $\partial$  for engine,  $\beta$  for planning destination factors in parallel. As interactive technology, social media facilitate the development and dissemination of information, ideas, interests, and other kinds of expression through virtual communities and networks. The social media company creates and maintains service-specific profiles for the website or app. Apps for smartphones and tablets make these platforms more accessible. There are many generic social media networks, but a few stand out.

$$G = [j] \csc \beta \int \int \int j \log \beta + \frac{\|j\|}{(\varphi - 1)^2} \tag{12}$$

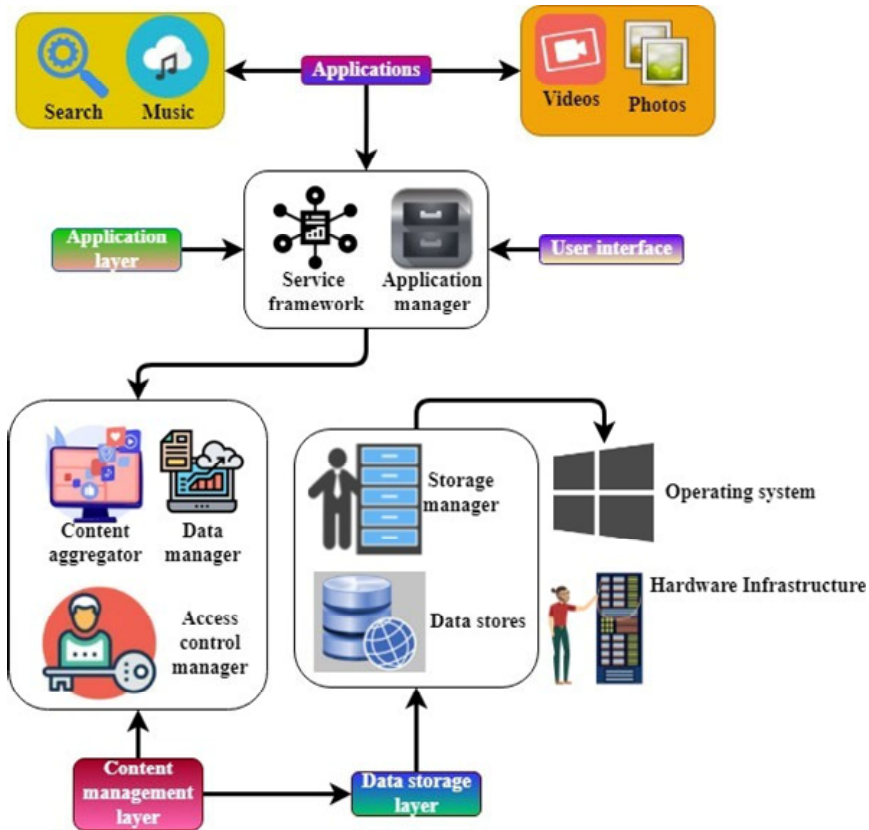
Equation (12) says that  $G$  is responsible for the message of models,  $j$  for algorithms,  $\log$  for the logarithmic function of execution,  $\varphi$  for distance visualisation,  $\csc$  for the trigonometric function of detection,  $\beta$  is the mathematical function of the tracking sentiment analysis. All the data that social media sites collect, even if they are picky about what they publish, is nevertheless kept someplace. While being stored on the server, data is often encrypted as a best practice, and the servers' access is then prohibited. For example, it is possible to utilise a graph store to keep track of social networks.

Figure 3 says locate searching for, have to sift through anything like a book or a place thoroughly. Research from industry researcher Music Watch shows that music and social media are now more intertwined than ever before. People who share interests and activities or want to learn more about other people's interests and activities can use these applications to form online communities. As a result, video helps be succinct and entice viewers in the initial few seconds of presentation. Posting certain images on social media might put career, relationships, and personal identity at risk of being exposed to cyberbullies. A network service is a feature or function that makes using a network easier. In most cases, it is delivered by a server which may be running one or more services based on network protocols operating at the application layer. App manager tasks include determining the appropriate apps for the company's needs, installing the software, and upgrading or fixing the programmer as needed. To keep track of social media feeds, may use an aggregator programmer. One of a company's data managers

oversees the company’s data systems and makes sure they are well-maintained. People, property, and valuables are all protected by an enterprise-class physical access control system. Using sophisticated alarm and identity management, can better regulate who has access to facility. Earning money through popular social media platforms such as Snapchat and Instagram may sound like a dream come true. A server somewhere still stores all that data, even if social media services are picky about what they publish. Server connections are already commonplace in operating systems, allowing access to files and printers. Those parts of a network’s architecture that handle data, applications, services, and multimedia traffic are referred to as networking infrastructure devices. According to the architecture design, the data storage layer determines the total solution’s responsiveness to incoming data streams. Different kinds of data are required for each type of processing. A content management system is a software tool for creating, editing and publishing material with numerous users.

$$H = I \int \int \int m [I] \text{csc } m(I) m \tag{13}$$

Figure 5 Application on the social networks in data storage (see online version for colours)



Equation (13) says  $H$  is the problem identification by search,  $I$  for music,  $m$  for videos, CSC for the trigonometric function of the application layer. It is possible to manage social media presence by developing, posting, and then monitoring the material share on



sites such as Facebook, Twitter, Instagram, and others. Engaging and communicating with social media users is a part of social media management. Create, maintain, and optimise consumers' digital experience with the help of a content management system.

$$L = \sum (M \log_9 \alpha \prod o + o) \sin M \alpha \quad (14)$$

Equation (14) says  $L$  for service framework,  $M$  for management of application manager,  $o$  for user interface,  $\sin$  for the trigonometric function of control aggregator,  $\alpha$  for the mathematical function of the management in the data manager,  $\log$  for the logarithmic function of access control manager. Networks are currently used to link operating systems and servers for access to file and print systems. It is a network operating system that supports workstations, database sharing, application sharing, and file and printer sharing among several machines in a network.

$$D = s^2 \left( n \|s\| \cot n \left( \sqrt[3]{n^{-5}} \right) \right) \int \int \int s \quad (15)$$

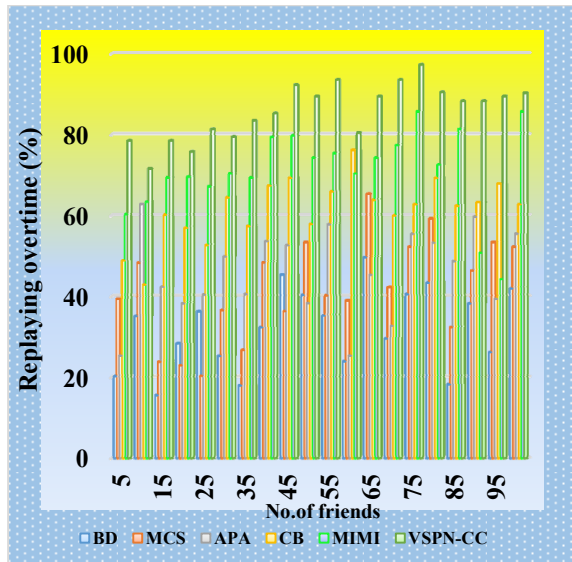
Equation (15) says  $D$  for data gathering of the storage manager,  $S$  for evolving methodologies of data store,  $n$  for automated recording in data in the operating system,  $\cot$  is the trigonometric function of content management layers. Instead of gigabytes, this storage is measured in terabytes and petabytes. As practical, the social media giants retain their server farms in data centres that are home to significant internet access points. Sites like Facebook and MySpace allow users to build public profiles, exchange messages, and connect with friends they met in the real world and new individuals they have discovered through common interests.

#### 4 Discuss the result analysis of the social networking process in a text message

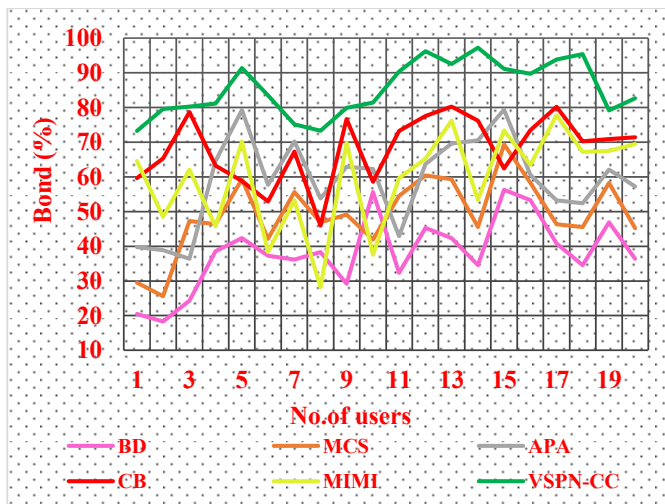
Data extraction from textual sources is known as text analytics to put it another way: text analysis can be used to analyses just about any text-based dataset out there. Natural human language is difficult for computers to grasp because of its complexity, subjectiveness, and quirks. However, text analytics precision has skyrocketed because of recent advancements in technology and methodology. The sheer volume of text data necessitates the usage of automated analysis tools, even if humans are still better at interpreting language. Using text analysis, consumer, brand, and product information may be gleaned from social media data. Amidst the excitement of the new possibilities and fears that they bring, people and organisations alike are affected. This curated collection of essays on virtual social networks is set in this tense atmosphere of anticipation and dread.

- a Implementation of regular media access actively: Figure 6 says that when a media message impacts an audience or an individual's beliefs, it is known as media influence. Researchers examine study participants' cognitive, behavioural and physiological responses to media exposure in the wake of media exposure. Channel refers to the medium used to transport a communication message, and the message is sent by the sender and must be delivered via a communication channel.

**Figure 6** Media access regularly (see online version for colours)



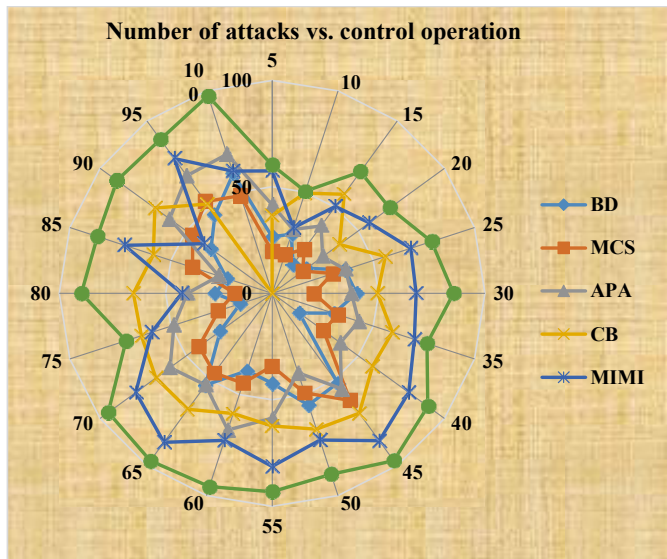
**Figure 7** Security services (see online version for colours)



b Approval of security services in IoT: Figure 7 denotes although text messages and e-mail are both secure, their security and privacy are limited. Use an encrypted e-mail or a secure e-mail form on a website to communicate confidentially. As mobile consumers become more aware of the possible security dangers inherent in ordinary text messaging or consumer chat apps, secure text messaging is becoming increasingly popular. As a result, all of the messages in phone's database are scrambled before being saved.

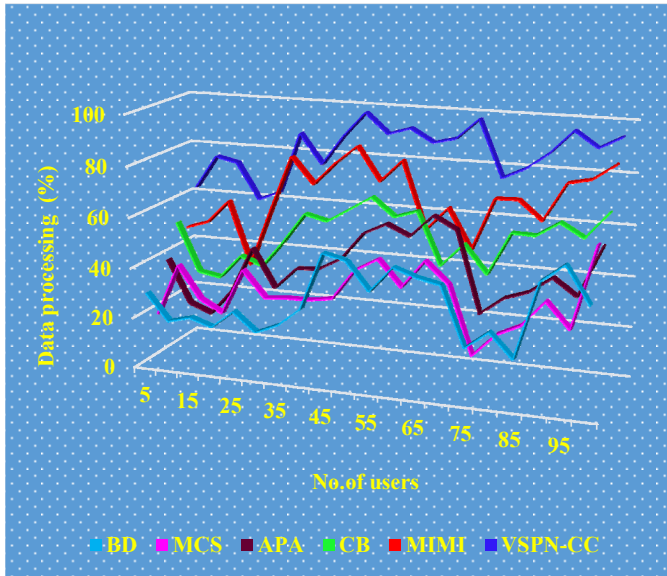
- c Determination of text attackers: Figure 8 refers to in SMS assaults; fraudsters create and distribute malware targeting a victim’s mobile device. These Trojans can transmit unauthorised phone calls and text messages without the user’s permission. Using a convincing text message, an attacker can persuade a target receiver to click on a link and transfer confidential information to the attacker or download malicious software to their smartphone. A frequent smashing tactic is sending an SMS message that includes a clickable link or a phone number.
- d Prediction from loss of information: Figure 9 says that text messaging does not effectively transmit tone, mood and other facial expressions and gestures, as well as body language and eye contact, which means that messages are likely to be misread. Interpersonal development among adolescents might be negatively affected by texting. Text-based media and information may be used as a baseline to ensure that information is accurate, efficient, and timely. Documenting written and spoken words and language translation is critical to preserving data and information.

**Figure 8** Number of attackers (see online version for colours)

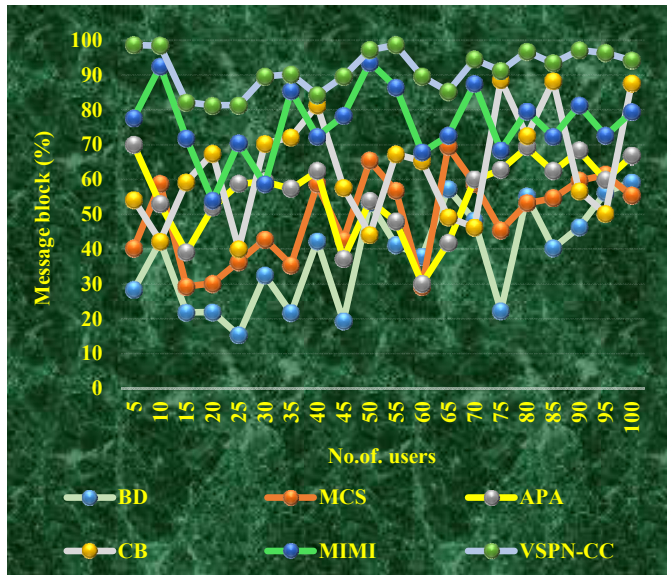


- e Blocking text messages via the internet: Figure 10 denotes it does not matter what kind or where it comes from because VSPN services encrypt everything that goes via the tunnel. Text messages are not secured since they are delivered over mobile network, but this ensures that they cannot be intercepted by anybody using public Wi-Fi. VPNs protect online privacy by encrypting data and masking true identity. As a result, it becomes more difficult for other parties to monitor and steal online activity. Every social network allows to submit certain information available to the general audience. Username, a single post, or the entirety of account might all fall under this category. Access to these public postings is unrestricted by any type of access control.

**Figure 9** Loss of information (see online version for colours)

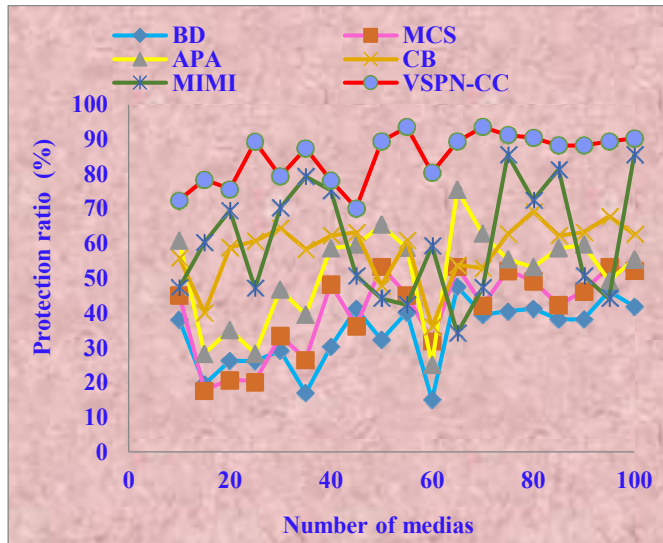


**Figure 10** Messages block (see online version for colours)



f Overall social networking protection: Figure 11 mentions internet privacy is at risk, and there are steps can take to protect self from these dangers, which are discussed in this article. Today’s age is more comfortable sharing their details and describing their life online. They do not realise how susceptible their public information is, which a wide audience views daily. The most critical vulnerabilities are identified, and various threat mitigation strategies and remedies are proposed. Finally, the authors offer the idea of a virtual community site that respects users’ privacy.

**Figure 11** Protection of social network messages (see online version for colours)



## 5 Conclusions

IoT, particularly in terms of how humans see these systems. An office setting that is utilised by both digital and physical people and systems might serve as a starting point for study in various areas in text messaging. Independent living and smart home settings aimed at supporting non-scientific users in their everyday routing may use some of the situations given here. Non-technical users can benefit from the IoT as it becomes more integrated into social lives in CC, allowing them to more easily comprehend the socio-technical relationships that constantly establish in a technologically advanced society, such as the concept of relationships to things depicted in Twitter tools. An ambient assisted living project in which heterogeneous distributed sensing and actuation systems utilise. Twitter to notify occupants and their family members about ongoing duties and activities will be the subject of future study of text messaging strategy in mobile platforms. Additionally, want to incorporate wearable sensor devices for monitoring personal health data in addition to the activities detected in the natural world. The future research of this article is based on the distribution of mobile system with advanced technique or algorithm in social networking concept. The outcome of the private social networking concept of mobile platforms obtained as regular media access actively is 85.7%, security services in IoT is 85.37%, text attackers is 83.6%, loss of information is 82.8%, blocking text messages is 91.48% and social networking protection is 84.16%.

## References

- Abkenar, S.B., Kashani, M.H., Mahdipour, E. and Jameii, S.M. (2021) 'Big data analytics meets social media: a systematic review of techniques, open issues, and future directions', *Telematics and Informatics*, Vol. 57, p.101517.
- Alkhamees, M., Alsaleem, S., Al-Qurishi, M., Al-Rubaian, M. and Hussain, A. (2021) 'User trustworthiness in online social networks: a systematic review', *Applied Soft Computing*, Vol. 103, p.107159.
- Azani, E. and Liv, N. (2020) 'A comprehensive doctrine for an evolving threat: countering terrorist use of social networks', *Studies in Conflict & Terrorism*, Vol. 43, No. 8, pp.728–752.
- Bayer, J.B., Triêu, P. and Ellison, N.B. (2020) 'Social media elements, ecologies, and effects', *Annual Review of Psychology*, 4 January, Vol. 71, pp.471–497.
- Breitinger, F., Tully-Doyle, R. and Hassenfeldt, C. (2020) 'A survey on smartphone user's security choices, awareness and education', *Computers & Security*, Vol. 88, No. 101647.
- Brindha, M.D., Jayaseelan, R. and Kadeswara, S. (2020) 'Social media reigned by information or misinformation about COVID-19: a phenomenological study', *Alochana Chakra Journal*, Vol. 9, No. 5, pp.585–602.
- Burbach, L., Halbach, P., Zieffle, M. and Calero Valdez, A. (2020) 'Opinion formation on the internet: the influence of personality, network structure, and content on sharing messages online', *Frontiers in Artificial Intelligence*, Vol. 3, p.45.
- Cecilia, J.M., Cano, J.C., Hernández-Orallo, E., Calafate, C.T. and Manzoni, P. (2020) 'Mobile crowdsensing approaches to address the COVID-19 pandemic in Spain', *IET Smart Cities*, Vol. 2, No. 2, pp.58–63.
- Dennis, S.A., Goodson, B.M. and Pearson, C.A. (2020) 'Online worker fraud and evolving threats to the integrity of MTurk data: a discussion of virtual private servers and the limitations of IP-based screening procedures', *Behavioral Research in Accounting*, Vol. 32, No. 1, pp.119–134.
- Dwivedi, Y.K., Hughes, D.L., Coombs, C., Constantiou, I., Duan, Y., Edwards, J.S. and Upadhyay, N. (2020) 'Impact of COVID-19 pandemic on information management research and practice: transforming education, work and life', *International Journal of Information Management*, 1 December, Vol. 55, p.102211.
- Fagherazzi, G., Goetzinger, C., Rashid, M.A., Aguayo, G.A. and Huiart, L. (2020) 'Digital health strategies to fight COVID-19 worldwide: challenges, recommendations, and a call for papers', *Journal of Medical Internet Research*, Vol. 22, No. 6, p.e19284.
- Fernández-Ardèvol, M., Belotti, F., Ieracitano, F., Mulargia, S., Rosales, A. and Comunello, F. (2020) '“I do it my way”: idioms of practice and digital media ideologies of adolescents and older adults', *New Media & Society*, Vol. 24, No. 1, pp.31–49.
- Galea, S., Merchant, R.M. and Lurie, N. (2020) 'The mental health consequences of COVID-19 and physical distancing: the need for prevention and early intervention', *JAMA Internal Medicine*, Vol. 180, No. 6, pp.817–818.
- García-Orosa, B., López-García, X. and Vázquez-Herrero, J. (2020) 'Journalism in digital native media: beyond technological determinism', *Media and Communication*, Vol. 8, No. 2, pp.5–15.
- Geeng, C., Hutson, J. and Roesner, F. (2020) 'Usable security: studying people's concerns and strategies when sexting', in *Sixteenth Symposium on Usable Privacy and Security*, University of Washington, pp.127–144.
- Gerke, D.R., Step, M.M., Rüniger, D., Fletcher, J.B., Brooks, R.A., Davis, N. and Reback, C.J. (2020) 'Associations between social support and social media use among young adult cisgender MSM and transgender women living with HIV', *Health Promotion Practice*, Vol. 21, No. 5, pp.705–715.
- Grewal, D., Hulland, J., Kopalle, P.K. and Karahanna, E. (2020) 'The future of technology and marketing: a multidisciplinary perspective', *Journal of the Academy of Marketing Science*, Vol. 48, No. 1, pp.1–8.

- Kaufmann, K. and Peil, C. (2020) 'The mobile instant messaging interview (MIMI): using WhatsApp to enhance self-reporting and explore media usage in situ', *Mobile Media & Communication*, Vol. 8, No. 2, pp.229–246.
- Kim, S. and Shrestha, R. (2020) 'Internet of vehicles, vehicular social networks, and cybersecurity', in *Automotive Cyber Security*, pp.149–181, Springer, Singapore.
- King, A.C., Campero, I., Sheats, J.L., Sweet, C.M.C., Espinosa, P.R., Garcia, D. and Ahn, D.K. (2020) 'Testing the effectiveness of physical activity advice delivered via text messaging vs. human phone advisors in a Latino population: the on the move randomized controlled trial design and methods', *Contemporary Clinical Trials*, Vol. 95, p.106084.
- Kizgin, H., Dey, B.L., Dwivedi, Y.K., Hughes, L., Jamal, A., Jones, P. and Williams, M.D. (2020) 'The impact of social media on consumer acculturation: current challenges, opportunities, and an agenda for research and practice', *International Journal of Information Management*, Vol. 51, No. 102026.
- Kujur, F. and Singh, S. (2020) 'Visual communication and consumer-brand relationship on social networking sites-uses & gratifications theory perspective', *Journal of Theoretical and Applied Electronic Commerce Research*, Vol. 15, No. 1, pp.30–47.
- Kumar, A., Sangwan, S.R. and Nayyar, A. (2020) 'Multimedia social big data: mining', in *Multimedia Big Data Computing for IoT Applications*, pp.289–321, Springer, Singapore.
- Lopez-Castroman, J., Moulahi, B., Azé, J., Bringay, S., Deninotti, J., Guillaume, S. and Baca-Garcia, E. (2020) 'Mining social networks to improve suicide prevention: a scoping review', *Journal of Neuroscience Research*, Vol. 98, No. 4, pp.616–625.
- Manca, S. (2020) 'Snapping, pinning, liking or texting: investigating social media in higher education beyond Facebook', *The Internet and Higher Education*, 1 January, Vol. 44, No. 100707.
- Manzerolle, V. and Daubs, M. (2021) 'Friction-free authenticity: mobile social networks and transactional affordances', *Media, Culture & Society*, Vol. 43, No. 7, pp.1279–1296, No. 163443721999953
- Matthes, J., Karsay, K., Schmuck, D. and Stevic, A. (2020) "'Too much to handle': impact of mobile social networking sites on information overload, depressive symptoms, and well-being", *Computers in Human Behavior*, Vol. 105, No. 106217.
- Milkova, A.A., Kinziabaeva, A.V., Vasileva, M.A., Slesova, E.A. and Lubyayaya, A.A. (2021) 'Sociolinguistic analysis of the communication style of users of social networks and messengers', *Laplage em Revista*, Vol. 7, No. 3B, pp.511–517.
- Ojagh, S., Malek, M.R., Saeedi, S. and Liang, S. (2020) 'A location-based orientation-aware recommender system using IoT smart devices and social networks', *Future Generation Computer Systems*, 1 July, Vol. 108, pp.97–118.
- Raamkumar, A.S., Tan, S.G. and Wee, H.L. (2020) 'Measuring the outreach efforts of public health authorities and the public response on Facebook during the COVID-19 pandemic in early 2020: cross-country comparison', *Journal of Medical Internet Research*, Vol. 22, No. 5, p.e19334.
- Razak, N.A., Malik, H.K.A., Rentah, F. and Mazlan, M.N.H. (2021) 'A comprehensive study of privacy and security risk awareness among mobile internet users for social networks sites in Malaysia', *International Journal of Business and Technology Management*, Vol. 3, No. 1, pp.1–20.
- Sahoo, S.R. and Gupta, B.B. (2019) 'Classification of various attacks and their defence mechanism in online social networks: a survey', *Enterprise Information Systems*, Vol. 13, No. 6, pp.832–864.
- Sinanan, J. and Gomes, C. (2020) "'Everybody needs friends': emotions, social networks and digital media in the friendships of international students", *International Journal of Cultural Studies*, Vol. 23, No. 5, pp.674–691.

- Sivarajah, U., Irani, Z., Gupta, S. and Mahroof, K. (2020) 'Role of big data and social media analytics for business to business sustainability: a participatory web context', *Industrial Marketing Management*, 1 April, Vol. 86, pp.163–179.
- Tang, Y. and Hew, K.F. (2020) 'Does mobile instant messaging facilitate social presence in online communication? A two-stage study of higher education students', *International Journal of Educational Technology in Higher Education*, Vol. 17, No. 1, pp.1–17.
- Tulu, M.M., Mkiramweni, M.E., Hou, R., Feisso, S. and Younas, T. (2020) 'Influential nodes selection to enhance data dissemination in mobile social networks: a survey', *Journal of Network and Computer Applications*, Vol. 169, p.102768.
- Wu, Y., Huang, H., Wu, N., Wang, Y., Bhuiyan, M.Z.A. and Wang, T. (2020) 'An incentive-based protection and recovery strategy for secure big data in social networks', *Information Sciences*, 1 January, Vol. 508, pp.79–91.